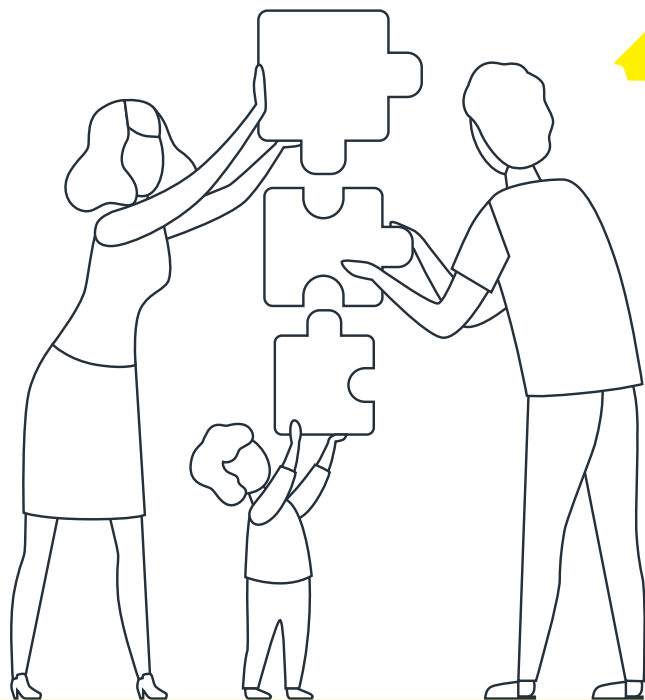


#Together

JIGSAW AND ARROWS

Combine the fun of a scavenger hunt with the challenge of puzzle solving.



How to play:

- Use a large puzzle or create one by cutting up a picture into pieces.
- Set out a trail using the image as inspiration.
- Place the pieces in envelopes around the trail (like controls in orienteering).
- Keep a look out for the controls, take the piece and follow the arrows to the next control.
- Visit all the controls and see if you can piece together the jigsaw.

THINK INC

Include alternative routes around rough or sloping ground for those with mobility impairments.



Pick out a piece of jigsaw.

You don't have to use controls and arrows, just hide the treasure.